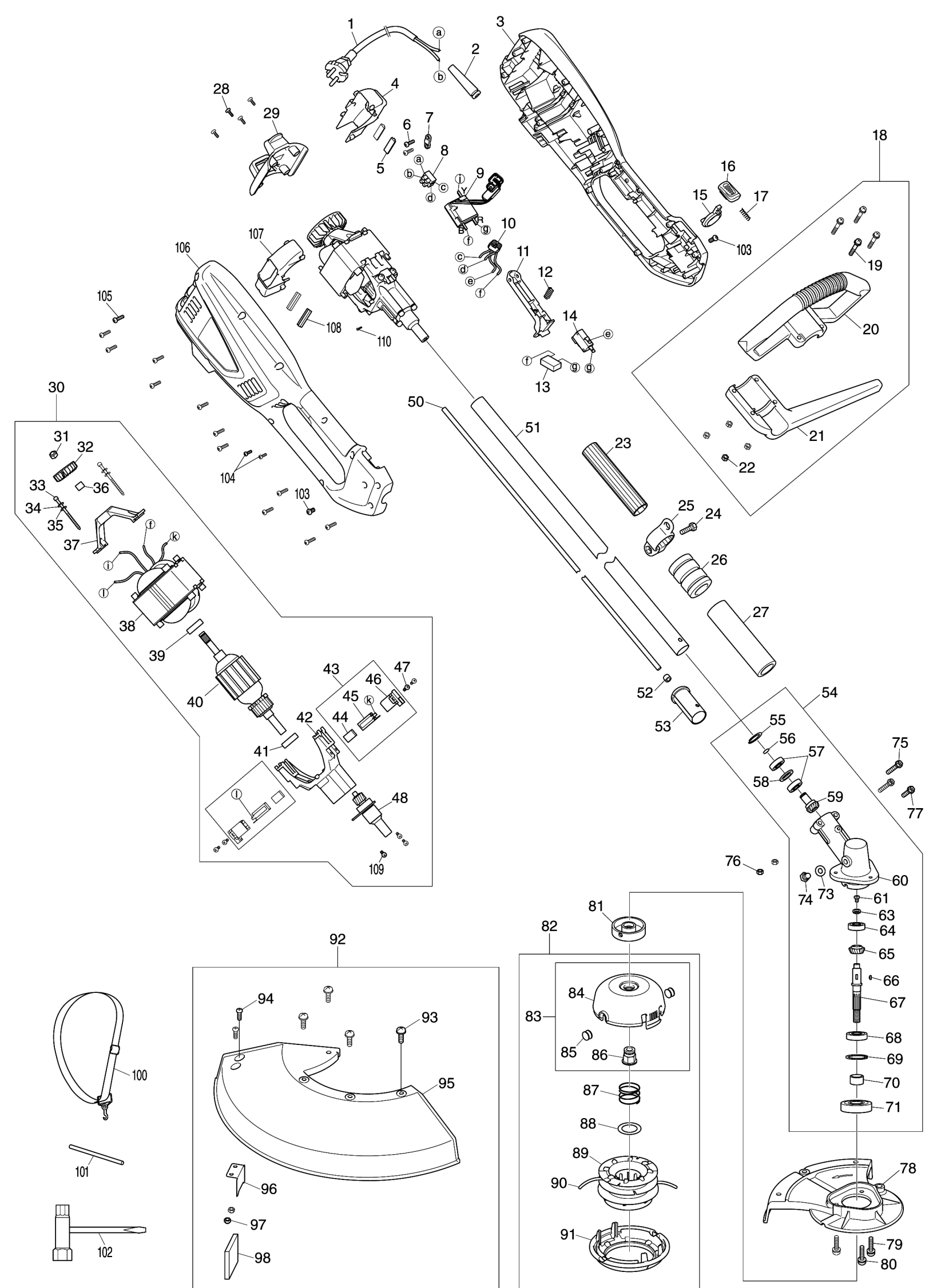


Model No.UR3502 ELECTRIC GRASS TRIMMER



Model No.UR3502 ELECTRIC GRASS TRIMMER

Артикул	Детали	Описание	Замена	Количество	New/Old	Продажи	Закупка	Примечание
001	YA00000497	POWER CORD & PLUG		1				
002	YA00000516	CORD PROTECTOR		1				
003	YA00000559	LEFT HOUSING		1	*			
003-1	YA00000617	HOUSING ASSEMBLY	S	1				
D10								
004	YA00000562	INC. 106						
004	YA00000562	LEFT VOLUTE CASE		1				
005	YA00000514	RUBBER PAD		2				
006	YA00000456	SELF TAPPING SCREW		2	*			
006-1	YA00000618	TAPPING SCREW ST4X14	O	2				
007	YA00000547	CABLE PRESS BOARD		1				
008	YA00000501	TERMINAL SET		2				
009	YA00000500	CONTROL PCB		1				
010	YA00000499	INDUCTANCE		1				
011	YA00000554	SWITCH TRIGGER		1				
012	YA00000513	SPRING		1				
013	YA00000498	CAPACITOR		1				
014	YA00000555	SWITCH		1				
015	YA00000539	SPACING COLLAR		1				
016	YA00000525	PUSH BUTTON		1				
017	YA00000511	COMPRESSION SPRING		1				
018	YA00000494	AUX.HANDLE ASS'Y		1				
D10								
019	YA00000445	BARREL SHAPED HEAD SCREW		4	*			
019-1	YA00000621	NYLOC SCREW	O	4				
020	YA00000564	AUX.HANDLE COVER		1				
021	YA00000563	AUX.HANDLE SUPPORT		1				
022	YA00000462	HEXAGONAL LOCKING NUT		4	*			
022-1	YA00000622	SELF-LOCKING NUT M5	O	4				
023	YA00000522	INSULATING COVER		1				
024	YA00000449	BARREL SHAPED HEAD SCREW		1	*			
024-1	YA00000711	BARREL SHAPED HEAD SCREW	O	1				
025	YA00000541	SHOULDER BELT RING		1				
026	YA00000521	RUBBER COVER		1				
027	YA00000519	FOAM GRIP		1				
028	YA00000453	SELF-TAPPING SCREW		4	*			
028-1	YA00000625	SELF TAPPING SCREW	O	4				
029	YA00000560	REAR COVER		1				
030	YA00000490	MOTOR ASS'Y		1				
D10								
031	YA00000463	ANTI-LOOSE NUT		1				
032	YA00000507	IMPELLER		1				
033	YA00000538	STATOR SCREW		2	*			
033-1	YA00000722	STATOR SCREW	O	2				
034	YA00000523	SPRING WASHER		2				
035	YA00000524	FLAT WASHER		2				
036	YA00000531	AXLE SLEEVE		1				
037	YA00000526	REAR BRACKET		1				
038	YA00000505	STATOR ASS'Y		1				
039	YA00000431	608 BEARING		1				
040	YA00000508	ARMATURE ASS'Y		1				
041	YA00000430	BEARING		1				
042	YA00000484	FRONT SUPPORT ASS'Y		1				
043	YA00000489	CARBON BRUSH ASS'Y		2				
D10								
044	YA00000504	CARBON BRUSH		1				
045	YA00000502	COPPER BRUSH HOLDER		1				
046	YA00000503	BRUSH HOLDER BRACKET		1				
047	YA00000455	3 IN 1 SCREW		4	*			
047-1	YA00000630	PAN HEAD SCREW M4X12 WITH WR	O	4				
048	YA00000483	SHAFT ASS'Y		1				
050	YA00000550	FLEXIBLE SHAFT		1				
051	YA00000481	TUBE ASS'Y		1				
052	YA00000528	FLEXIBLE SHAFT CLIP		1				
053	YA00000553	CONNECTOR		1				
054	YA00000480	GEAR BOX ASS'Y		1				
D10								
055	YA00000468	RETAINING COLLAR		1				
056	YA00000434	C SHAPE RETAINING COLLAR		1				
057	YA00000471	6900 BEARING		2				
058	YA00000440	WASHER		1				
059	YA00000442	BEVEL GEAR		1				
060	YA00000548	GEAR BOX		1				
061	YA00000460	SUNK SCREW		1	*			
061-1	YA00000719	SUNK SCREW	O	1				
063	YA00000542	WASHER		1				
064	YA00000470	629Z BEARING		1				
065	YA00000443	BEVEL GEAR		1				
066	YA00000465	WHITNEY KEY		1				
067	YA00000552	OUTPUT SHAFT		1				
068	YA00000469	BEARING 6002-2RS		1				
069	YA00000467	JUMP RING		1				
070	YA00000515	AXLE SLEEVE		1				
071	YA00000441	OIL SEAL		1				
073	YA00000533	SEALING SHEET		1				
074	YA00000459	HEX HEAD SCREW		1				
075	YA00000458	SCREW SET		2				
076	YA00000461	SELF-LOCKING NUT		2				
077	YA00000446	SCREW SET		1				
078	YA00000546	SMALL SAFETY GUARD		1				
079	YA00000537	3 IN 1 ANTI LOOSE SCREW		2	*			
079-1	YA00000631	TAPPING SCREW 4X10	O	2				
080	YA00000444	3 IN 1 ANTI LOOSE SCREW		1	*			
080-1	YA00000632	NYLOC SCREW	O	1				
081	YA00000540	AXLE RING		1				
082	YA00000479	SPOOL ASS'Y		1				
D10								
083	YA00000477	INC. 84-91						
083	YA00000477	SPOOL BASE ASS'Y		1	*			
D10								
083-1	YA00000682	INC. 84-86						
083-1	YA00000682	SPOOL BASE ASS'Y	S	1				
D10								
084	YA00000556	INC. 84-86						
084	YA00000556	SPOOL BASE		1	*			
084-1	YA00000678	SPOOL BASE	S	1				
085	YA00000532	EYELET		2				
086	YA00000535	NUT		1				
087	YA00000466	SPRING		1				
088	YA00000510	GEAR CUSHION 1		1				
089	YA00000549	WINDING BASE		1	*			
089-1	YA00000679	WINDING BASE	S	1				
090	YA00000436	NYLON LINE		1				
091	YA00000557	SPOOL COVER		1	*			
091-1	YA00000680	SPOOL COVER	S	1				
092	YA00000496	OUTER SAFETY GUARD ASS'Y		1				
D10								
093	YA00000536	INC. 93-98						
093	YA00000536	BARREL SHAPED HEAD SCREW		4	*			
093-1	YA00000723	BARREL SHAPED HEAD SCREW	O	4				
094	YA00000450	SCREW		2	*			
094-1	YA00000638	SCREW	O	2				
095	YA00000545	SAFETY GUARD		1				
096	YA00000439	BLADE		1				
097	YA00000464	SELF-LOCKING NUT		2	*			
097-1	YA00000721	SELF-LOCKING NUT	O	2				
098	YA00000472	BLADE PROTECTOR		1				
099	YA00000478	ACCESSORY		1	*			
D10								
100	YA00000435	INC. 100-102						
100	YA00000435	SHOULDER BELT		1				
101	YA00000473	PIN		1				
102	YA00000438	SPANNER		1				
103	YA00000451	SCREW		2	*			
103-1	YA00000640	SCREW M5X10	O	2				
104	YA00000454	SELF-TAPPING SCREW		2	*			
104-1	YA00000641	SELF TAPPING SCREW	O	2				
105	YA00000452	SELF-TAPPING SCREW		12	*			
105-1	YA00000656	SELF TAPPING SCREW ST 4.2	O	12				
106	YA00000558	RIGHT HOUSING		1	*			
106-1	YA00000617	HOUSING ASSEMBLY	S	1				
D10								
107	YA00000561	INC. 3						
107	YA00000561	RIGHT VOLUTE HOUSING		1				
108	YA00000514	RUBBER PAD		2				
109	YA00000455	3 IN 1 SCREW		3	*			
109-1	YA00000630	PAN HEAD SCREW M4X12 WITH WR	O	3				