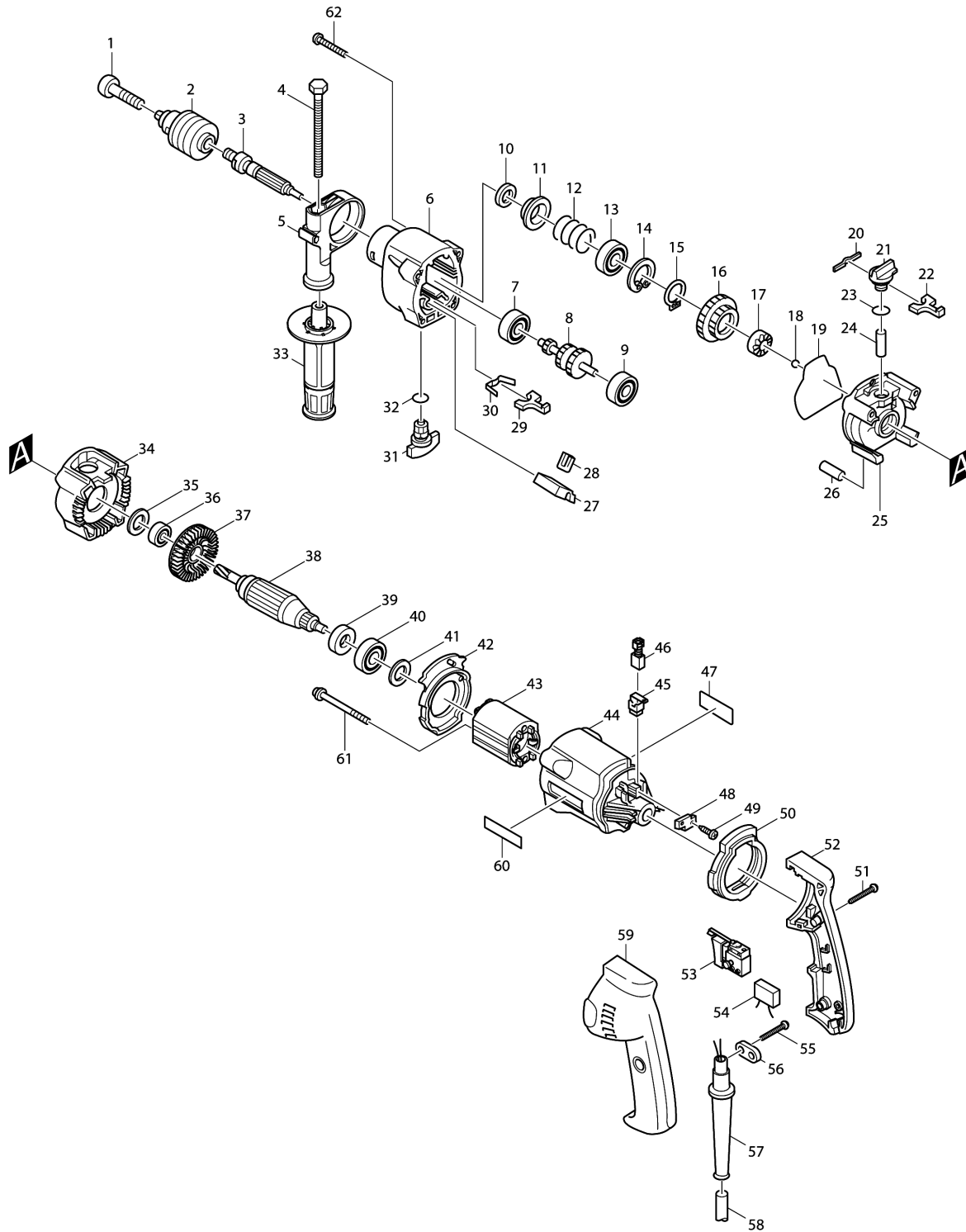


Model No.HP2030 2-SPEED HAMMER DRILL 20MM



Model No.HP2030 2-SPEED HAMMER DRILL 20MM

Item	Parts No.	Description	I/C	Qty	New/Old	Opt. 1	Opt. 2	Note
001A_	251460-1	- FLAT HEAD SCREW M6X22		1	*			
001A1	251469-3	- FLAT HEAD SCREW M6X25	<	1				
002A_	763105-4	DRILL CHUCK S13		1	*			
002A1	192552-6	DRILL CHUCK S13		1				
003	322786-9	SPINDLE		1	*			
003-1	323854-1	SPINDLE	S	1				
004	921919-9	HEX. BOLT M8X110		1	*			
004-1	921923-8	HEX. BOLT M8X120	O	1				
005	415485-1	GRIP BASE		1				
006	415614-6	GEAR HOUSING		1	*			
006-1	415614-6	GEAR HOUSING	O	1				
007-2	211014-6	BALL BEARING 606		1				
008	226818-3	GEAR COMPLETE 8-19-25		1				
009-2	211014-6	BALL BEARING 606		1				
010	213314-0	OIL SEAL 19		1				
011	344177-4	CUP WASHER 26		1				
012	233091-8	COMPRESSION SPRING 16		1				
013	211206-7	BALL BEARING 6202LLB		1				
014	962153-2	RETAINING RING R-35		1				
015	961055-9	RETAINING RING S-15		1				
016	226289-4	SPUR GEAR 27-38		1				
017	223104-3	CAM A		1				
018	216018-3	STEEL BALL 5.0		1	*			
018-1	216001-0	STEEL BALL 3.5	X	1				
019	213759-2	O RING 72		1				
020	232053-3	LEAF SPRING		1				
021	415619-6	CHANGE LEVER A		1				
022	344178-2	LOCK PLATE		1				
023	213162-7	O RING 14		1				
024	322787-7	CHANGE PIN 8		1				
025	159793-7	CAM HOUSING COMPLETE		1	*			
025-1	151764-0	CAM HOUSING COMPLETE	X	1				
026	256226-4	PIN 4		1	*			
026-1	256251-5	PIN 4	O	1				
027	415621-9	RACK 12		1				
028	344179-0	CHANGE PLATE		1				
029	344178-2	LOCK PLATE		1				
030	232143-2	LEAF SPRING		1				
031	415620-1	CHANGE LEVER B		1				
032	213162-7	O RING 14		1				
033A_	152489-9	GRIP 36 COMPLETE		1				
034	415615-4	CAM HOUSING COVER		1				

Please order the parts with part number.

Print Date 27/6/2019

Model No.HP2030 2-SPEED HAMMER DRILL 20MM

Item	Parts No.	Description	I/C	Qty	New/Old	Opt. 1	Opt. 2	Note
035	253707-9	FLAT WASHER 16		1	*			
036	210005-4	BALL BEARING 608DDW		1				
037	241850-6	FAN 60		1				
038C_	517103-8	ARMATURE ASS'Y 220V		1				
D10		INC. 36,37,39,40						
039	681614-0	INSULATION WASHER		1				
040	211026-9	BALL BEARING 627LLB		1	*			
040-1	210025-8	BALL BEARING 627LLB	O	1				
041	253707-9	FLAT WASHER 16		1				
042	415618-8	BAFFLE PLATE		1				
043B_	633298-0	FIELD 220V		1	*			
043B1	633413-6	FIELD 220V	X	1				
044	415601-5	MOTOR HOUSING		1				
045	643923-5	BRUSH HOLDER		2				
046A_	191962-4	CARBON BRUSH CB-419		1				
047	857769-5	NAME PLATE		1				
048	415622-7	BRUSH HOLDER PLATE		2				
049	266007-8	TAPPING SCREW BIND PT 3X10		4				
050	421505-1	CUSHION RUBBER		1				
051A_	266121-0	TAPPING SCREW FLANGE PF 4X18		5	*			
051A1	265995-6	TAPPING SCREW 4X18	O	5				
052	182724-1	HANDLE SET		1	*			
D10		INC. 59			*			
052-1	182724-1	HANDLE SET	X	1				
D10		INC. 59						
053B_	651952-4	SWITCH 8653C721AD 200V- 240V		1	*			
053B1	651987-5	SWITCH	X	1	*			
053B2	651987-5	SWITCH	X	1	*			
053B3	651986-7	SWITCH TG803TLB-1	O	1				
054B_	645256-4	NOISE SUPPRESSOR		1	*			
054B1	645144-5	NOISE SUPPRESSOR	O	1				
055A_	266121-0	TAPPING SCREW FLANGE PF 4X18		2	*			
055A1	265995-6	TAPPING SCREW 4X18	O	2				
056A_	687052-4	STRAIN RELIEF		1				
057B_	682549-8	CORD GUARD 8-85		1				
058H_	665394-6	POWER SUPPLY CORD 1.0-2- 2.5		1				
059	182724-1	HANDLE SET		1	*			
D10		INC. 52			*			
059-1	182724-1	HANDLE SET	X	1				
D10		INC. 52						

Please order the parts with part number.

Print Date 27/6/2019

Model No.HP2030 2-SPEED HAMMER DRILL 20MM

Item	Parts No.	Description	I/C	Qty	New/Old	Opt. 1	Opt. 2	Note
060	819063-3	MAKITA LABEL		1				
061A_	266113-9	TAPPING SCREW FLANGE PF 4X65		2	*			
061A1	266060-4	TAPPING SCREW 4X65	O	2				
062A_	266108-2	TAPPING SCREW FLANGE PF 5X70		4	*			
062A1	266038-7	TAPPING SCREW 5X70	O	4				
063	256251-5	PIN 4		1				
A01	415486-9	DEPTH GAUGE		1				
A02A_	763430-3	CHUCK KEY S13		1	*			
A02A1	763440-0	CHUCK KEY S13	O	1				
A03	410102-8	KEY HOLDER		1				
A04A_	824474-9	PLASTIC CARRYING CASE		1	*			
A04A1	824485-4	PLASTIC CARRYING CASE	O	1				
C10	183091-7	SLIDE LATCH RL SET		1				
E03	654128-2	EARTH TERMINAL		1				

Please order the parts with part number.

Print Date 27/6/2019