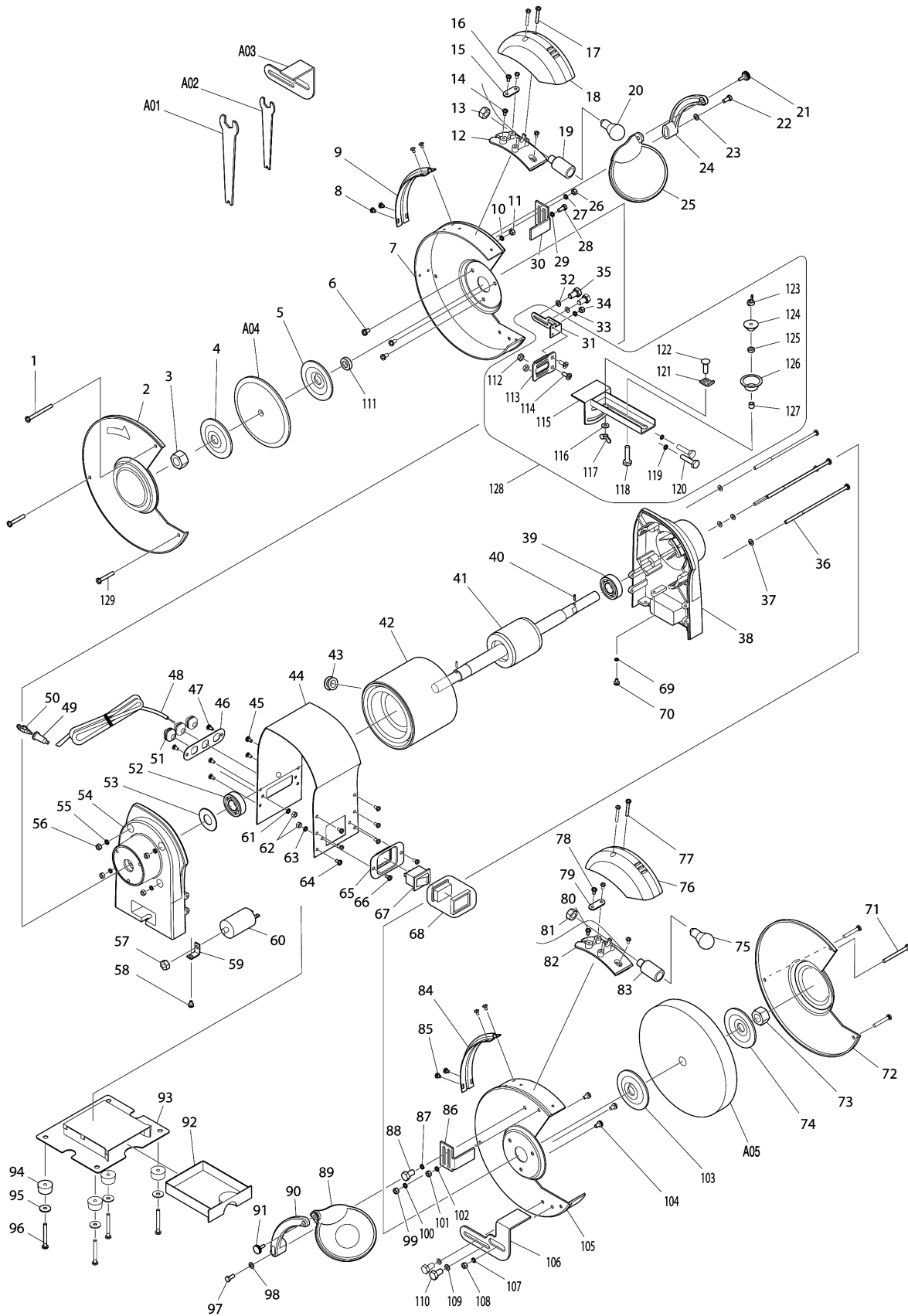


# Model No.GB602W BENCH GRINDER 150MM



Model No.GB602W BENCH GRINDER 150MM

Item	Parts No.	Description	I/C	Qty	New/Old	Opt. 1	Opt. 2	Note
001	911274-7	PAN HEAD SCREW M5X50		2				
002	AL00000201	WHEEL COVER L(OUTER) CE		1				
003	AL00000003	HEX NUT M12L		1				
004	AL00000004	OUTER FLANGE		1				
005	AL00000005	INNER FLANGE		1				
006	911206-4	PAN HEAD SCREW M5X10		3				
007	AL00000203	WHEEL COVER L(INNER)(CE)		1				
008	911107-6	PAN HEAD SCREW M4X8		4				
009	AL00000007	CORD CLAMP		1				
010	942101-7	SPRING WASHER 5		1				
011	931201-8	HEX. NUT M5		1				
012	AL00000008	LAMP COVER BASE		1				
013	AL00000009	NUT		1				
014	911107-6	PAN HEAD SCREW M4X8		2				
015	AL00000010	STRAIN RELIEF		1				
016	911118-1	PAN HEAD SCREW M4X12		2				
017	911156-3	PAN HEAD SCREW M4X30		2				
018	AL00000011	LAMP COVER		1				
019	AL00000012	LAMP HOLDER ASSY		1				
020	AL00000013	BULB		1				
021	AL00000014	ADJUSTABLE KNOB		1				
022	921351-7	HEX. BOLT M6X30		1				
023	941151-9	FLAT WASHER 6		1				
024	AL00000015	EYESHIELD MOUNTING ARM L		1				
025	AL00000016	SAFETY EYE SHIELD		1				
026	931201-8	HEX. NUT M5		1				
027	942101-7	SPRING WASHER 5		1				
028	921212-1	HEX. BOLT M5X12		1				
029	942101-7	SPRING WASHER 5		1				
030	AL00000017	SPARK DEFLECTOR (LEFT)		1				
031	AL00000082	TOOL REST HOLDER		1				
032	941202-8	FLAT WASHER 8		2				
033	942101-7	SPRING WASHER 5		1				
034	931201-8	HEX. NUT M5		1				
035	921411-5	HEX. BOLT M8X12		2				
036	265004-1	PAN HEAD SCREW M5X135		4	*			
036-1	AL00000113	SCREW M5X135	O	4				
037	941101-4	FLAT WASHER 5		4				
038	AL00000019	MOTOR HOUSING COVER R		1				
039	211206-7	BALL BEARING 6202LLB		1				
040	951051-5	SPRING PIN 3-8		2				
041	AL00000215	ROTOR		1	*			

Please order the parts with part number.

Print Date 8/9/2020

Model No.GB602W BENCH GRINDER 150MM

Item	Parts No.	Description	I/C	Qty	New/Old	Opt. 1	Opt. 2	Note
041-1	AL00000229	ROTOR	S	1				
042	AL00000185	STATOR		1	*			
042-1	AL00000228	STATOR	S	1				
043	AL00000022	BUSH		1				
044	AL00000183	MOTOR HOUSING		1				
045	911113-1	PAN HEAD SCREW M4X10 WITH WR		4				
046	AL00000192	CORD CLIP PLATE(CE)		1				
047	911113-1	PAN HEAD SCREW M4X10 WITH WR		2				
048	AL00000152	WIRE WITH PLUG		1				
051	AL00000026	CORD GUARD		3				
052	211206-7	BALL BEARING 6202LLB		1				
053	AL00000027	WAVE WASHER		1				
054	AL00000028	MOTOR HOUSING COVER L		1				
055	942101-7	SPRING WASHER 5		4				
056	931201-8	HEX. NUT M5		4				
057	931402-8	HEX. NUT M8		1				
058	911113-1	PAN HEAD SCREW M4X10 WITH WR		1				
059	AL00000029	CAPACITOR CLAMP		1				
060	AL00000095	CAPACITOR		1				
061	942051-6	SPRING WASHER 4		2				
062	931102-0	HEX. NUT M4		4				
063	942051-6	SPRING WASHER 4		2				
064	911113-1	PAN HEAD SCREW M4X10 WITH WR		6				
065	AL00000031	SWITCH BOARD		1				
066	911113-1	PAN HEAD SCREW M4X10 WITH WR		2				
067	AL00000032	SWITCH ASSY COVER		1	*			
067-1	AL00000168	SWITCH WITH COVER	<	1				
068	AL00000033	SWITCH COVER ASSY		1	*			
069	AL00000134	TOOTHED LOCK WASHER 4		1				
070	911113-1	PAN HEAD SCREW M4X10 WITH WR		1				
072	AL00000218	WHEEL COVER R		1				
073	AL00000035	HEX NUT M12		1				
074	AL00000004	OUTER FLANGE		1				
075	AL00000013	BULB		1				
076	AL00000011	LAMP COVER		1				
077	911156-3	PAN HEAD SCREW M4X30		2				
078	911118-1	PAN HEAD SCREW M4X12		2				
079	AL00000010	STRAIN RELIEF		1				
080	911107-6	PAN HEAD SCREW M4X8		2				
081	AL00000009	NUT		1				

Please order the parts with part number.

Print Date 8/9/2020

Model No.GB602W BENCH GRINDER 150MM

Item	Parts No.	Description	I/C	Qty	New/Old	Opt. 1	Opt. 2	Note
082	AL00000008	LAMP COVER BASE		1				
083	AL00000012	LAMP HOLDER ASSY		1				
084	AL00000007	CORD CLAMP		1				
085	911107-6	PAN HEAD SCREW M4X8		4				
086	AL00000036	SPARK DEFLECTOR (RIGHT)		1				
087	942101-7	SPRING WASHER 5		1				
088	921212-1	HEX. BOLT M5X12		1				
089	AL00000037	SAFETY EYE SHIELD WITH MAG		1				
090	AL00000038	EYESHIELD MOUNTING ARM R		1				
091	AL00000014	ADJUSTABLE KNOB		1				
092	AL00000039	COOLANT TRAY		1				
093	AL00000040	COOLANT TRAY PLATE ASSY		1				
094	AL00000041	RUBBER SLEEVE		4				
095	941051-3	FLAT WASHER 4		4				
096	911121-2	PAN HEAD SCREW M4X14		4				
097	921351-7	HEX. BOLT M6X30		1				
098	941151-9	FLAT WASHER 6		1				
099	931201-8	HEX. NUT M5		1				
100	942101-7	SPRING WASHER 5		1				
101	931201-8	HEX. NUT M5		1				
102	942101-7	SPRING WASHER 5		1				
103	AL00000005	INNER FLANGE		1				
104	911206-4	PAN HEAD SCREW M5X10		3				
105	AL00000207	WHEEL COVER R(INNER)		1				
106	AL00000043	WORK REST (RIGHT)		1				
107	942101-7	SPRING WASHER 5		1				
108	931201-8	HEX. NUT M5		1				
109	941202-8	FLAT WASHER 8		2				
110	921411-5	HEX. BOLT M8X12		2				
111	AL00000001	SLEEVE		1				
112	931301-4	HEX. NUT M6		2				
113	AL00000047	TOOL REST HOLDER		1				
114	AL00000048	+COUNTERSUNK HEAD SCREW M6X		2				
115	AL00000049	TOOL REST		1				
116	AL00000050	FLAT WASHER 10		1				
117	934401-9	WING NUT M8		1				
118	921362-2	HEX. BOLT M6X40		1				
119	942151-2	SPRING WASHER 6		2				
120	921362-2	HEX. BOLT M6X40		2				
121	AL00000051	STOPPER		1				
122	AL00000052	CAP SQUARE NECK BOLT M8X20		1				

Please order the parts with part number.

Print Date 8/9/2020

Model No.GB602W BENCH GRINDER 150MM

Item	Parts No.	Description	I/C	Qty	New/Old	Opt. 1	Opt. 2	Note
123	934301-3	WING NUT M6		1				
124	AL00000053	HOLDER A		1				
125	931301-4	HEX. NUT M6		1				
126	AL00000054	HOLDER B		1				
127	AL00000055	SPACER		1				
128	A-47531	SAW BLADE SHARPENING KIT		1				
D10		INC. 31,112-127						
129	911267-4	PAN HEAD SCREW M5X45		4				
A01	AL00000044	WRENCH 10-13		1				
A02	AL00000045	WRENCH 8-19		1				
A03	A-47195	GRINDING WHEEL (BENCH,150)		1				
A04	A-47210	GRINDING WHEEL (BENCH,150)		1	*			
A04-1	B-51926	GRINDING WHEEL (BENCH,150)	<	1				
F01	AL00000147	SAFETY GOGGLES		1				

Please order the parts with part number.

Print Date 8/9/2020