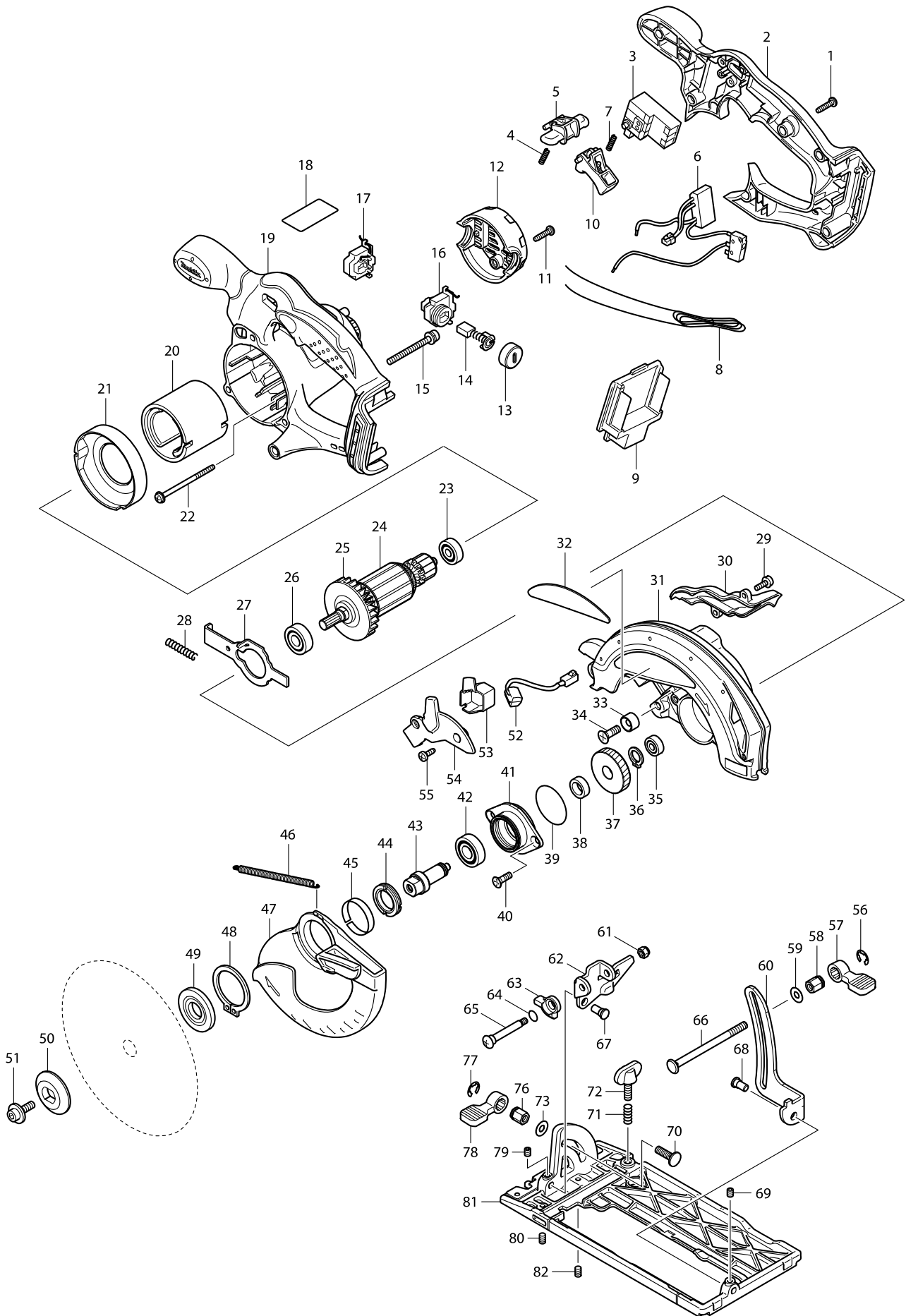


Model No. BSS610 CORDLESS CIRCULAR SAW 165MM



Model No. BSS610 CORDLESS CIRCULAR SAW 165MM

Item	Parts No.	Description	I/C	Qty	N/O	Opt. 1	Opt. 2	Note
001	265995-6	TAPPING SCREW 4X18		6				
002A	419279-6	HANDLE COVER		1	*			
002B	419279-6	HANDLE COVER		1	*			
002C	419279-6	HANDLE COVER		1	*			
002D	419279-6	HANDLE COVER		1	*			
002E	419279-6	HANDLE COVER		1	*			
002-1A	141470-5	HANDLE COVER COMPLETE	X	1				
002-1B	141470-5	HANDLE COVER COMPLETE	X	1				
002-1C	141470-5	HANDLE COVER COMPLETE	X	1				
002-1D	141470-5	HANDLE COVER COMPLETE	X	1				
002-1E	141470-5	HANDLE COVER COMPLETE	X	1				
002-1F	141470-5	HANDLE COVER COMPLETE		1				
002-1G	141470-5	HANDLE COVER COMPLETE		1				
002A_A	142885-9	HANDLE COVER COMPLETE	S	1				
002A_B	142885-9	HANDLE COVER COMPLETE	S	1				
002A_C	142885-9	HANDLE COVER COMPLETE	S	1				
002A_D	142885-9	HANDLE COVER COMPLETE	S	1				
002A_E	142885-9	HANDLE COVER COMPLETE	S	1				
003A	651956-6	SWITCH TG72BD		1	*			
003B	651956-6	SWITCH TG72BD		1	*			
003C	651956-6	SWITCH TG72BD		1	*			
003D	651956-6	SWITCH TG72BD		1	*			
003E	651956-6	SWITCH TG72BD		1	*			
003-1A	650631-1	SWITCH	X	1				
003-1B	650631-1	SWITCH	X	1				
003-1C	650631-1	SWITCH	X	1				
003-1D	650631-1	SWITCH	X	1				
003-1E	650631-1	SWITCH	X	1				
003-1F	650631-1	SWITCH		1				
003-1G	650631-1	SWITCH		1				
004	231469-9	COMPRESSION SPRING 4		1				
005	419322-1	LOCK OFF LEVER		1				
006A	631695-4	POWER SUPPLY CIRCUIT		1	*			
006B	631695-4	POWER SUPPLY CIRCUIT		1	*			
006C	631695-4	POWER SUPPLY CIRCUIT		1	*			
006D	631695-4	POWER SUPPLY CIRCUIT		1	*			
006E	631695-4	POWER SUPPLY CIRCUIT		1	*			
006-1A	620088-0	POWER SUPPLY CIRCUIT	X	1				
006-1B	620088-0	POWER SUPPLY CIRCUIT	X	1				
006-1C	620088-0	POWER SUPPLY CIRCUIT	X	1				
006-1D	620088-0	POWER SUPPLY CIRCUIT	X	1				
006-1E	620088-0	POWER SUPPLY CIRCUIT	X	1				
006-1F	620088-0	POWER SUPPLY CIRCUIT		1				
006-1G	620088-0	POWER SUPPLY CIRCUIT		1				
007	231469-9	COMPRESSION SPRING 4		1				
008A	638432-7	LEAD UNIT		1	*			
008B	638432-7	LEAD UNIT		1	*			
008C	638432-7	LEAD UNIT		1	*			

Model No. BSS610 CORDLESS CIRCULAR SAW 165MM

Item	Parts No.	Description	I/C	Qty	N/O	Opt. 1	Opt. 2	Note
008D	638432-7	LEAD UNIT		1	*			
008E	638432-7	LEAD UNIT		1	*			
009A	643812-4	TERMINAL		1	*			
009B	643812-4	TERMINAL		1	*			
009C	643812-4	TERMINAL		1	*			
009D	643812-4	TERMINAL		1	*			
009E	643812-4	TERMINAL		1	*			
009-1A	643838-6	TERMINAL	O	1	*			
009-1B	643838-6	TERMINAL	O	1	*			
009-1C	643838-6	TERMINAL	O	1	*			
009-1D	643838-6	TERMINAL	O	1	*			
009-1E	643838-6	TERMINAL	O	1	*			
009-2A	643859-8	TERMINAL	X	1	*			
009-2B	643859-8	TERMINAL	X	1	*			
009-2C	643859-8	TERMINAL	X	1	*			
009-2D	643859-8	TERMINAL	X	1	*			
009-2E	643859-8	TERMINAL	X	1	*			
009-2F	643859-8	TERMINAL		1	*			
009-2G	643859-8	TERMINAL		1	*			
009-3	644808-8	TERMINAL	O	1				
010	419176-6	SWITCH LEVER		1				
011	265995-6	TAPPING SCREW 4X18		2				
012	419281-9	REAR COVER		1				
013	643941-3	BRUSH HOLDER CAP		2				
014A	191976-3	CARBON BRUSH CB-432		1	*			
014B	191976-3	CARBON BRUSH CB-432		1	*			
014C	191976-3	CARBON BRUSH CB-432		1	*			
014D	191976-3	CARBON BRUSH CB-432		1	*			
014E	191976-3	CARBON BRUSH CB-432		1	*			
014-1A	194435-6	CARBON BRUSH CB-441	<	1				
014-1B	194435-6	CARBON BRUSH CB-441	<	1				
014-1C	194435-6	CARBON BRUSH CB-441	<	1				
014-1D	194435-6	CARBON BRUSH CB-441	<	1				
014-1E	194435-6	CARBON BRUSH CB-441	<	1				
014-1F	194435-6	CARBON BRUSH CB-441		1				
014-1G	194435-6	CARBON BRUSH CB-441		1				
015	911263-2	PAN HEAD SCREW M5X40		3				
016A	643814-0	BRUSH HOLDER		1	*			
016B	643814-0	BRUSH HOLDER		1	*			
016C	643814-0	BRUSH HOLDER		1	*			
016D	643814-0	BRUSH HOLDER		1	*			
016E	643814-0	BRUSH HOLDER		1	*			
016-1A	643882-3	BRUSH HOLDER	X	1				
016-1B	643882-3	BRUSH HOLDER	X	1				
016-1C	643882-3	BRUSH HOLDER	X	1				
016-1D	643882-3	BRUSH HOLDER	X	1				
016-1E	643882-3	BRUSH HOLDER	X	1				
016-1F	643882-3	BRUSH HOLDER		1				

Model No. BSS610 CORDLESS CIRCULAR SAW 165MM

Item	Parts No.	Description	I/C	Qty	N/O	Opt. 1	Opt. 2	Note
016-1G	643882-3	BRUSH HOLDER		1				
017A	643813-2	BRUSH HOLDER		1	*			
017B	643813-2	BRUSH HOLDER		1	*			
017C	643813-2	BRUSH HOLDER		1	*			
017D	643813-2	BRUSH HOLDER		1	*			
017E	643813-2	BRUSH HOLDER		1	*			
017-1A	643883-1	BRUSH HOLDER	X	1				
017-1B	643883-1	BRUSH HOLDER	X	1				
017-1C	643883-1	BRUSH HOLDER	X	1				
017-1D	643883-1	BRUSH HOLDER	X	1				
017-1E	643883-1	BRUSH HOLDER	X	1				
017-1F	643883-1	BRUSH HOLDER		1				
017-1G	643883-1	BRUSH HOLDER		1				
018A	861816-6	BSS610 NAME PLATE		1	*			
018B	861816-6	BSS610 NAME PLATE		1	*			
018C	861816-6	BSS610 NAME PLATE		1	*			
018D	861816-6	BSS610 NAME PLATE		1	*			
018E	861816-6	BSS610 NAME PLATE		1	*			
018-1A	862352-5	BSS610 NAME PLATE	<	1				
018-1B	862352-5	BSS610 NAME PLATE	<	1				
018-1C	862352-5	BSS610 NAME PLATE	<	1				
018-1D	862352-5	BSS610 NAME PLATE	<	1				
018-1E	862352-5	BSS610 NAME PLATE	<	1				
018-1F	862352-5	BSS610 NAME PLATE		1				
018-1G	862352-5	BSS610 NAME PLATE		1				
019A	419278-8	MOTOR HOUSING		1	*			
019B	419278-8	MOTOR HOUSING		1	*			
019C	419278-8	MOTOR HOUSING		1	*			
019D	419278-8	MOTOR HOUSING		1	*			
019E	419278-8	MOTOR HOUSING		1	*			
019-1A	141471-3	MOTOR HOUSING COMPLETE	X	1	*			
019-1B	141471-3	MOTOR HOUSING COMPLETE	X	1	*			
019-1C	141471-3	MOTOR HOUSING COMPLETE	X	1	*			
019-1D	141471-3	MOTOR HOUSING COMPLETE	X	1	*			
019-1E	141471-3	MOTOR HOUSING COMPLETE	X	1	*			
019-1F	141471-3	MOTOR HOUSING COMPLETE		1				
019-1G	141471-3	MOTOR HOUSING COMPLETE		1				
019-2A	141471-3	MOTOR HOUSING COMPLETE	S	1				
019-2B	141471-3	MOTOR HOUSING COMPLETE	S	1				
019-2C	141471-3	MOTOR HOUSING COMPLETE	S	1				
019-2D	141471-3	MOTOR HOUSING COMPLETE	S	1				
019-2E	141471-3	MOTOR HOUSING COMPLETE	S	1				
020	638107-8	YOKE UNIT		1				
021	419285-1	BAFFLE PLATE		1				
022	266292-3	TAPPING SCREW 4X65		2				
023	210023-2	BALL BEARING 627DDW		1				
024	519173-3	ARMATURE ASS'Y 18V		1				
D10		INC. 23,25,26						

Item	Parts No.	Description	I/C	Qty	N/O	Opt. 1	Opt. 2	Note
025	241869-5	FAN 55		1				
026	211061-7	BALL BEARING 6000LLB		1				
027A	345659-9	SHAFT LOCK		1	*			
027B	345659-9	SHAFT LOCK		1	*			
027C	345659-9	SHAFT LOCK		1	*			
027D	345659-9	SHAFT LOCK		1	*			
027E	345659-9	SHAFT LOCK		1	*			
027-1A	346059-6	SHAFT LOCK	<	1				
027-1B	346059-6	SHAFT LOCK	<	1				
027-1C	346059-6	SHAFT LOCK	<	1				
027-1D	346059-6	SHAFT LOCK	<	1				
027-1E	346059-6	SHAFT LOCK	<	1				
027-1F	346059-6	SHAFT LOCK		1				
027-1G	346059-6	SHAFT LOCK		1				
028	233092-6	COMPRESSION SPRING 5		1				
029	911118-1	PAN HEAD SCREW M4X12		2				
030	419284-3	BLOWER NOZZLE		1				
031	188045-9	BLADE CASE SET		1				
C10	213434-0	O RING 26		1				
D10		INC. 32						
C20	816847-0	OPERATIONAL INDICATION LABEL		1	*			
C20	816847-0	OPERATIONAL INDICATION LABEL		1	*			
C20	816847-0	OPERATIONAL INDICATION LABEL		1	*			
C20	816847-0	OPERATIONAL INDICATION LABEL		1	*			
C20	816847-0	OPERATIONAL INDICATION LABEL		1	*			
032	819217-2	MAKITA LOGO PLATE		1				
033	262049-0	RUBBER RING 6		1				
034	251368-9	+ COUNTERSUNK SCREW M6		1				
035	210028-2	BALL BEARING 606ZZ		1				
036	961052-5	RETAINING RING S-12		1				
037	227156-6	SPUR GEAR 52		1				
038	257173-2	RING 12		1				
039	213512-6	O RING 39		1				
040	265034-2	+ COUNTERSUNK HEAD SCREW M5X		2				
041	318009-1	BEARING BOX		1				
042	211131-2	BALL BEARING 6001DDW		1				
043	324626-7	SPINDLE		1				
044	285845-9	BEARING RETAINER 19-29		1				
045	345469-4	THICKNESS RING		1				
046	231821-1	TENSION SPRING 3		1				
047	419286-9	SAFETY COVER		1				
048	961152-1	RETAINING RING (EXT) S-34		1				
049	224397-5	INNER FLANGE 40		1				
050	224282-2	OUTER FLANGE 40		1				
051	266133-3	HEX. SOCKET HEAD BOLT M6X20		1				
052	631694-6	LED CIRCUIT		1				
053	419341-7	CONNECTOR BOX		1				
054	419282-7	LIGHT COVER		1				

Model No. BSS610 CORDLESS CIRCULAR SAW 165MM

Item	Parts No.	Description	I/C	Qty	N/O	Opt. 1	Opt. 2	Note
055	266026-4	TAPPING SCREW BIND CT 4X12		2				
056	961014-3	STOP RING E-8		1				
057	272229-0	LEVER 40		1				
058	252158-3	HEX.NUT M6		1				
059	941151-9	FLAT WASHER 6		1				
060	345658-1	DEPTH GUIDE		1				
061	252103-8	HEX. LOCK NUT M5-8		1				
062	345657-3	ANGULAR GUIDE		1				
063	317986-4	STOPPER		1				
064	213062-1	O RING 9		1				
065	265084-7	+ TRUSS HEAD SCREW M5		1				
066	266194-3	FLAT HEAD SCREW M6X90		1				
067A	256442-8	SHOULDER PIN 6-7		1	*			
067B	256442-8	SHOULDER PIN 6-7		1	*			
067C	256442-8	SHOULDER PIN 6-7		1	*			
067D	256442-8	SHOULDER PIN 6-7		1	*			
067E	256442-8	SHOULDER PIN 6-7		1	*			
067-1A	256480-0	SHOULDER PIN 6-7	O	1				
067-1B	256480-0	SHOULDER PIN 6-7	O	1				
067-1C	256480-0	SHOULDER PIN 6-7	O	1				
067-1D	256480-0	SHOULDER PIN 6-7	O	1				
067-1E	256480-0	SHOULDER PIN 6-7	O	1				
067-1F	256480-0	SHOULDER PIN 6-7		1				
067-1G	256480-0	SHOULDER PIN 6-7		1				
068A	256442-8	SHOULDER PIN 6-7		1	*			
068B	256442-8	SHOULDER PIN 6-7		1	*			
068C	256442-8	SHOULDER PIN 6-7		1	*			
068D	256442-8	SHOULDER PIN 6-7		1	*			
068E	256442-8	SHOULDER PIN 6-7		1	*			
068-1A	256480-0	SHOULDER PIN 6-7	O	1				
068-1B	256480-0	SHOULDER PIN 6-7	O	1				
068-1C	256480-0	SHOULDER PIN 6-7	O	1				
068-1D	256480-0	SHOULDER PIN 6-7	O	1				
068-1E	256480-0	SHOULDER PIN 6-7	O	1				
068-1F	256480-0	SHOULDER PIN 6-7		1				
068-1G	256480-0	SHOULDER PIN 6-7		1				
069	266264-8	H.S.SET SCREW(FLAT POINT)M5X6		1				
070	251919-8	CAP SQUARE NECK BOLT M6X20		1				
071	231007-7	COMPRESSION SPRING 6		1				
072	251896-4	SCREW M5X20		1				
073	941151-9	FLAT WASHER 6		1				
076	252133-9	HEX. NUT M6		1				
077	961014-3	STOP RING E-8		1				
078	272251-7	LEVER 30		1				
079	266264-8	H.S.SET SCREW(FLAT POINT)M5X6		1				
080	266229-0	H.S.SET SCREW(CUP POINT)M5X8		1				
081	154832-8	BASE COMPLETE		1				
C10	816851-9	SCALE PLATE		1				

Item	Parts No.	Description	I/C	Qty	N/O	Opt. 1	Opt. 2	Note
082	266229-0	H.S.SET SCREW(CUP POINT)M5X8		1				
083	419283-5	DUST NOZZLE		1				
084	911118-1	PAN HEAD SCREW M4X12		1				
085	253186-1	FLAT WASHER 7		1				
A01	164095-8	GUIDE RULE		1				
A02A	***DC18SC	DC18SC CHARGER		1				
A02B	***DC18SC	DC18SC CHARGER		1				
A02C	***DC18RA	DC18RA FAST CHARGER		1	*			
A02D	***DC18RA	DC18RA FAST CHARGER		1	*			
A02-1C	***DC18RC	DC18RC FAST CHARGER	<	1				
A02-1D	***DC18RC	DC18RC FAST CHARGER	<	1				
A02-1F	***DC18RC	DC18RC FAST CHARGER		1				
A03A	194204-5	BATTERY BL1830 SET		1	*			
A03B	194204-5	BATTERY BL1830 SET		2	*			
A03C	194204-5	BATTERY BL1830 SET		1	*			
A03D	194204-5	BATTERY BL1830 SET		2	*			
A03-1A	194204-5	BATTERY BL1830 SET	O	1	*			
A03-1B	194204-5	BATTERY BL1830 SET	O	2	*			
A03-1C	194204-5	BATTERY BL1830 SET	O	1	*			
A03-1D	194204-5	BATTERY BL1830 SET	O	2	*			
A03-2A	194204-5	BATTERY BL1830 SET	O	1	*			
A03-2B	194204-5	BATTERY BL1830 SET	O	2	*			
A03-2C	194204-5	BATTERY BL1830 SET	O	1	*			
A03-2D	194204-5	BATTERY BL1830 SET	O	2	*			
A03-3A	194204-5	BATTERY BL1830 SET	O	1	*			
A03-3B	194204-5	BATTERY BL1830 SET	O	2	*			
A03-3C	194204-5	BATTERY BL1830 SET	O	1	*			
A03-3D	194204-5	BATTERY BL1830 SET	O	2	*			
A03-4A	194204-5	BATTERY BL1830 SET	O	1	*			
A03-4B	194204-5	BATTERY BL1830 SET	O	2	*			
A03-4C	194204-5	BATTERY BL1830 SET	O	1	*			
A03-4D	194204-5	BATTERY BL1830 SET	O	2	*			
A03-5A	194204-5	BATTERY BL1830 SET	O	1	*			
A03-5B	194204-5	BATTERY BL1830 SET	O	2	*			
A03-5C	194204-5	BATTERY BL1830 SET	O	1	*			
A03-5D	194204-5	BATTERY BL1830 SET	O	2	*			
A03-5F	194204-5	BATTERY BL1830 SET		2	*			
A03-6A	194204-5	BATTERY BL1830 SET	O	1				
A03-6B	194204-5	BATTERY BL1830 SET	O	2				
A03-6C	194204-5	BATTERY BL1830 SET	O	1				
A03-6D	194204-5	BATTERY BL1830 SET	O	2				
A03-6F	194204-5	BATTERY BL1830 SET	O	2				
A04	783203-8	HEX. WRENCH 5		1				
A05A	824757-7	PLASTIC CASE		1				
C10	163455-1	LATCH		2				
C20	419360-3	HANDLE		1				
A05B	824757-7	PLASTIC CASE		1				
C10	163455-1	LATCH		2				

